

RESEARCH SUMMARY:

Evaluation of ATPsorb™ on growth performance in nursery pigs.

BACKGROUND:

ATPsorb™ is a feed technology used to support feed efficiency and reduce feed cost. It is a unique combination of lysophospholipids and several non-starch polysaccharide (NSP) degrading enzymes, including xylanase and alpha galactosidase. ATPsorb™ enhances nutrient availability for your animals in two ways. First, the enzymes increase nutrient digestion in the gastrointestinal tract. In addition, these enzymes also break down anti-nutritional factors such as those in Soybean Meal. Secondly, through the lysophospholipid technology nutrient absorption in the small intestine is improved.

This trial was run with:

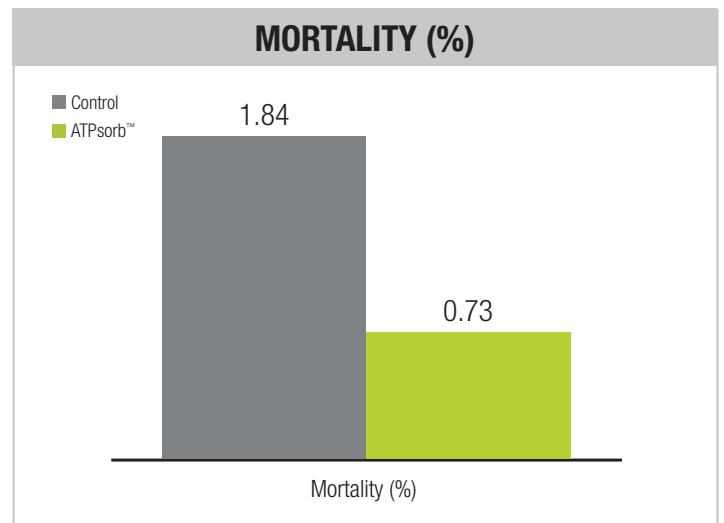
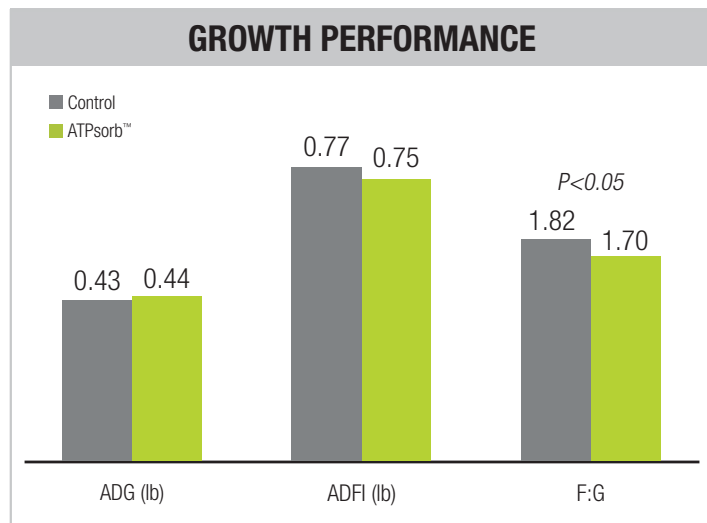
- 551 weaned commercial pigs
- 9-10 replications; 29 pigs/pen
- 21 day study

TREATMENTS:

- Control – Standard nursery feed without antibiotics
- ATPsorb™ – Standard nursery feed without antibiotics + 2 lbs/ton ATPsorb™

CONCLUSION:

- **6.59%** improvement in feed efficiency
- **60.33%** decrease in mortality



Value of ATPsorb™ Supplementation

Day 0-21 ROI Calculations

- FI = 0.75 lb * 21 d = 15.75 lb in 21 d
- ATPsorb™ FI = 15.75 lb * 0.1% = 0.016 lb
0.1% = 2 lbs of ATPsorb™
- 0.016 lb * \$3.25 lb = **\$0.05 per pig = Cost of ATPsorb™**

Feed Efficiency (P<0.05)

- F:G, 1.82 vs 1.70 = \$0.25 per pig for 21 days
- **Feed savings of 1.1 lb for 1st 21 days**
- Average feed cost used \$0.23 per lb
- **\$0.25 - \$0.05 = \$0.20 per pig savings**
- **5:1 Feed Efficiency Improvement**

Mortality (P=0.33)

- 60% improvement in livability and a \$42 wean pig average
- **3 more pigs with ATPsorb™ = (3*\$42)/290 = \$0.43 per pig**
290 = number of pigs per treatment