

# FLY IDENTIFICATION SHEET



FURST-MCNESS COMPANY

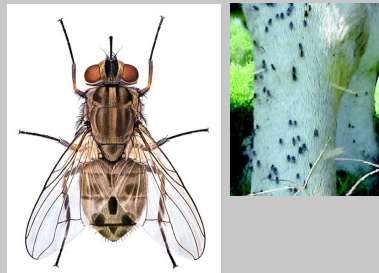


## HORN FLY

**Description:**  
Small (0.1 - 0.15 inches), grayish-black. Horn flies spend their time on the back and along the sides of cattle. Mostly a pest of range cattle.

**Life cycle:**  
The cycle of egg to mature fly is between 10 - 14 days.

**When are they a problem?**  
When 100 - 200 flies are present on the animal, reduced animal weight gain may be noticeable.



## STABLE FLY

**Description:**  
Gray, similar to house flies but have a checkerboard pattern; 0.25 - 0.3 inches long. Stable flies tend to congregate on the lower part of the legs of cattle. Mostly a problem for dairy and feedlot cattle.

**Life Cycle:**  
The life span of the stable fly is about 2 to 3 weeks. Active May - Sept.

**When are they a problem?**  
Cattle will engage in fly avoidance behaviors such as tail switching and foot stomping. High stable fly populations may cause up to 15% loss of body weight.

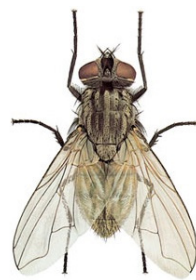


## FACE FLY

**Description:**  
Dark gray and resemble house flies but larger and darker in color; 0.25 - 0.3 inches long. Face flies with gather near the eyes and nostrils, more of a problem for range cattle than dairy cattle.

**Life cycle:**  
The cycle of egg to mature fly is between 12 - 21 days. Active Apr - Nov.

**When are they a problem?**  
Cattle will engage in fly avoidance behaviors such as seeking out shade or water, normal grazing activity will be disrupted. Face flies help to spread pink eye.



## HOUSE FLY

**Description:**  
Dull gray and about 0.25 inches long. House flies are mostly a problem for dairy and feedlot cattle. Move between their feeding sites and sunny areas nearby on walls, plants, or fences. Will feed on manure, plant material and nasal and eye secretions.

**Life cycle:**  
The cycle of egg to mature fly is between 10 - 14 days.

**When are they a problem?**  
Cattle will engage in fly avoidance behaviors and reduce the amount of time spent eating. House flies can carry several diseases and parasites.

McNess currently has three products that are designed to be used in an integrated pest management system. Included are IGR and ClariFly, which are only available mixed into products, and Rabon 7.76%, which can be mixed into a product or used in on-farm mixing.

Below is a listing of the features and benefits comparison of these products.

	IGR	Rabon®	ClariFly®
<b>Labeled for use in:</b>			
Dairy	X	X	X
Beef	X	X	X
Calves			X
Swine		X	
Horses		X	
<b>Cleared for use on:</b>			
Horn Fly	X	X	X
Face Fly		X	X
House Fly		X	X
Stable Fly		X	X
<b>Appropriate for us in:</b>			
Pasture Setting	X	X	X
Confinement Situations		X	X
<b>Reduces fly populations:</b>			
By interrupting fly life cycle	X		X
Through direct toxicity		X	
<b>Pelletable</b>			X
<b>No withdrawal Period on:</b>			
Milk	X	X	X
Meat Animals	X	X	X
<b>Kills adult flies</b>		X	
<b>Available for on-farm mixing</b>		X	
<b>Non-toxic to humans or animals</b>	X		X
<b>No documented fly resistance</b>	X		X
<b>Compatible with biological fly control methods</b>	X		X
<b>Daily intake necessary for product to be affective</b>	X		